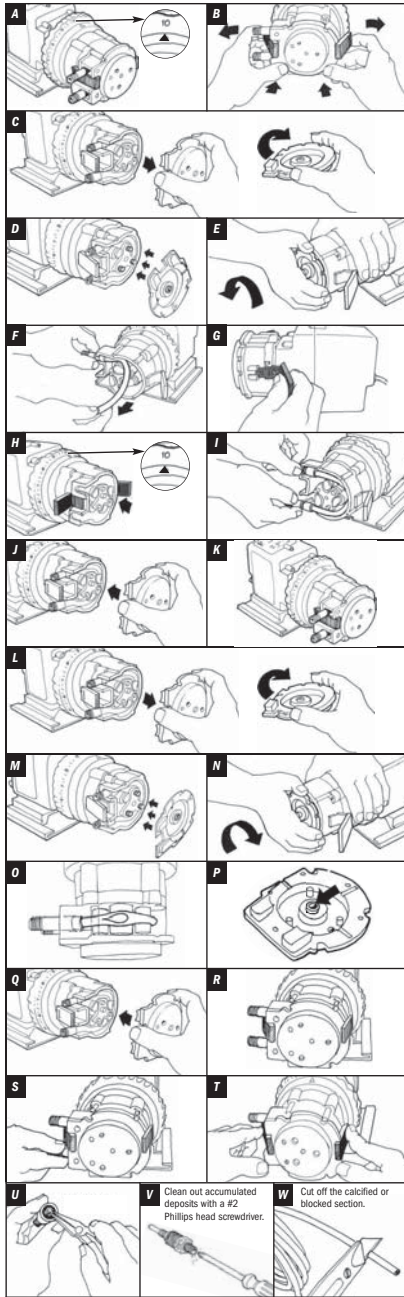


# QuickPro® PUMP HEAD SERVICE KIT

## Instructions for QuickPro® and S3QP Pump Heads

**⚠ WARNING** TO BE INSTALLED AND MAINTAINED BY PROPERLY TRAINED PROFESSIONAL INSTALLER ONLY. READ MANUAL & LABELS FOR ALL SAFETY INFORMATION & INSTRUCTIONS.

**Illustrations reference Classic pumps**



**I PREPARATION**

- 1 Follow all safety precautions prior to tube replacement.
- 2 Prior to service, pump water or a compatible buffer solution through the pump and suction and discharge lines to remove chemical and avoid contact.

**II REMOVE THE PUMP TUBE**

- 1 Turn pump off and unplug the power cord. On the Classic Adjustable model, ensure that the feed rate control is set to 10. **Figure A**
- 2 Depressurize and disconnect the suction and discharge lines.
- 3 Open the back and front of the latches on both sides of the head. Carefully fold latches back to prevent contact with the cover. **Figure B**  
For CE pump only: Remove the safety screw on cover.
- 4 Remove the tube housing cover and flip to use as a tool in the next step. **Figure C**
- 5 Align the center of the inverted cover with the center of the roller assembly so that the three holes on the face of the cover align with the three knurled lugs on the roller assembly. Position the cover feet near the tube fittings. **Figure D**  
NOTE: The roller assembly needs to be collapsed to remove the tube.
- 6 On the Classic Adjustable pump, hold the feed rate control securely. For other pumps, hold the motor securely. Use the tube housing cover as a wrench and quickly (snap) rotate the cover counter-clockwise to collapse the roller assembly. The tube will no longer be pressed against the tube housing wall. **Figure E**
- 7 Remove and discard the pump tube. **Figure F**
- 8 Remove the roller assembly, and the tube housing. On the Classic Adjustable pump also remove the shaft. Set them aside to reinstall later.
- 9 Use a non-citrus all-purpose cleaner to clean chemical residue from the tube housing and cover.
- 10 Check the housing for cracks and replace it if it is cracked.
- 11 Replace latches. **Figure G**
- 12 Reinstall the clean tube housing. On the Classic Adjustable pump, also install the shaft into the feed rate control.
- 13 Apply AquaShield™ to the shaft tip.
- 14 Install the new roller assembly.

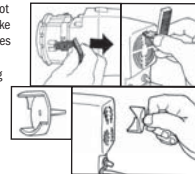
**III INSTALL THE PUMP TUBE AND EXPAND THE ROLLER ASSEMBLY**

- IMPORTANT! DO NOT lubricate pump tube or roller assembly.**
- 1 Ensure the power to the pump is off and the pump is unplugged. On the Classic Adjustable model, ensure that the feed rate control is set to 10. **Figure H**
  - 2 Place the new tube in the pump head; use your fingers to center it over the rollers. **Figure I**
  - 3 Place the tube housing cover on the tube housing, affix the front latches to the cover lip and then press the latches back to secure. Be sure the cover is seated with the sleeve bearing on the shaft and is flush with the housing before latching. **Figure J**
  - 4 With the cover latched, plug the pump in and turn the power on. Allow the pump to run the roller assembly in its collapsed position for approximately two minutes to relax the tube. **Figure K**
  - 5 Turn the pump off and disconnect the power.
  - 6 Remove the tube housing cover and flip to use as a tool in the next step. **Figure L**
  - 7 Align the center of the inverted cover with the center of the roller assembly so that the three holes on the face of the cover align with the three knurled lugs on the roller assembly. Position the cover feet near the bottom. **Figure M**  
NOTE: The roller assembly needs to be expanded so the tube is pressed against the tube housing wall.
  - 8 Expand roller assembly. Hold the feed rate control or motor securely, use the cover as a wrench and quickly (snap) rotate the roller assembly clockwise to expand the roller assembly. The tube will be pressed against the tube housing wall. **Figures N & O** Proceed to step 9.

**ONLY THE TUBE HOUSING LATCH OR STENNER FAN BRAKE TOOL SHOULD BE USED FOR BELOW STEPS a to c.**

**Classic Fixed Model**

- a. Slide one latch out to remove it from the tube housing. Insert the latch end into the key slot or the separate fan brake tool into the rear motor vent. While pressing the latch or fan brake into the rear of the motor, gently rotate the cover clockwise until it stops. Refer to the figures on the right.



NOTE: The tube housing latch and fan brake tool keep the shaft from rotating when expanding the roller assembly.

- b. Holding the motor securely, use the cover as a wrench and quickly (snap) rotate the roller assembly clockwise to expand the roller assembly. The tube will be pressed against the tube housing wall. **Figures N & O**
- c. Remove the latch from the vent and re-attach it to the tube housing or set the fan brake tool aside for future use. **Figure G** Proceed to step 9.

- 9 Apply a small amount of AquaShield™ to the cover bushing ONLY. DO NOT lubricate the pump tube. **Figure P**
- 10 Place the tube housing cover (feet first) on the tube housing, affix the front of the latches to the cover lip and then press the latches back to secure. Be sure the cover is seated with the sleeve bearing on the shaft and is flush with the housing before latching. **Figure Q**

**IV CENTER NEW TUBE**

- 1 Ensure the pump is off. Lift the latch located between the tube fittings, leaving the end of the latch engaged with the lip on the tube housing cover. Leave the latch on the opposite side engaged. **Figure R**
- 2 Plug the pump in and turn it on. Turn the tube fitting on the suction side not more than 1/8 of a turn in the direction tube must move. **Figure S**
- 3 DO NOT let go of fitting until tube rides approximately in center of rollers.
- 4 Turn the pump off, let go of the fitting, and secure the latch between the fittings. **Figure T**  
For CE pump only: Reinstall the safety screw on the cover.
- 5 Inspect the suction and discharge lines, point of injection, and check valve for blockages. Clean and/or replace as required. Failure to do so may lead to poor pump performance, including shortened tube life. Reference your pump owner's manual for details.
- 6 Reconnect the suction and discharge lines using the new 1/4" nuts & ferrules or 3/8" nuts. DO NOT allow tube fittings to turn inside the pump housing.
- 7 Turn the pump on and verify operation.

**V CLEAN THE POINT OF INJECTION**

**⚠ HAZARDOUS PRESSURE/CHEMICAL EXPOSURE**

- ⚠ Use caution and bleed off all resident system pressure prior to attempting service or installation.
- ⚠ Use caution when disconnecting discharge line from pump. Discharge line may be under pressure. Discharge line may contain chemical.
- ⚠ To reduce risk of exposure, the use of proper personal protective equipment is mandatory when working on or near chemical metering pumps.

**1 NOTICE:** Pumps are installed with either a duckbill check valve, ball check valve, or injection fitting depending on pressure rating and model. All allow the extension tip to be installed in the center of the pipe directly in the flow of water to help reduce deposit accumulation.

- 1 Turn metering pump off and unplug cord. Disable any water pump or auxiliary equipment's electrical supply.
- 2 Depressurize system and bleed pressure from pump discharge line.
- 3 Loosen and remove the 1/4" nut & ferrule or the 3/8" nut from the check valve or injection fitting to disconnect discharge tubing.

**Duckbill or Ball Check Valve, go to 4**

**Injection Fitting, skip 4 and go to 5**

- 4 Unscrew the top fitting (check valve body) to disassemble. The bottom fitting (injection fitting with arrow) should remain attached to the pipe.
  - Remove duckbill **Figure U** or remove ball check components from check valve body. Inspect and replace parts as needed. If using a ball check valve be careful not to stretch or damage the spring.

- 5 Insert a #2 Phillips head screwdriver through injection fitting into the pipe to locate or break up accumulated deposits. If screwdriver cannot be inserted, drill the deposit out of the injection fitting. DO NOT drill through the opposite pipe wall. **Figure V**

- 6 Replace discharge line if cracked or deteriorated. If the end is clogged, cut off the calcified or blocked section of discharge line. **Figure W**

**7 Duckbill or Ball Check Valve**

- a. Reassemble the check valve.
- b. Replace ferrule and reinstall the discharge line to the check valve approximately 3/4" until it stops.

**Injection Fitting**

- Replace ferrule and reinstall the discharge line to the injection fitting approximately 3/4" until it stops.

- 8 Tighten the connecting nut finger tight while firmly holding the tube fitting. The 3/8" nut may be wrench tightened one additional half turn. If leak occurs, gradually tighten the 3/8" nut as required.

- 9 Enable the water pump electrical supply and pressurize the water system.

NOTE: The roller assembly must be expanded so the tube is pressed against the tube housing wall.

- 10 Turn the metering pump back in service and inspect all connections for leaks.