

Poultry & Livestock Water Injection Pumps

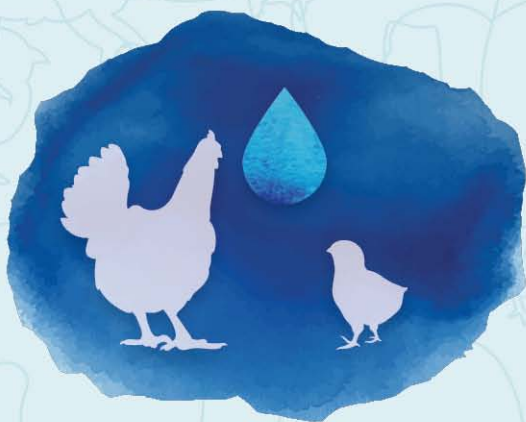


FOR ANIMAL HEALTH WATER IS ESSENTIAL

Quality water has been proven to be a fundamental part of poultry and livestock production.

Increased water consumption results in optimal growth.

Clean water improves the performance of the drinking system.



FOR QUALITY WATER PUMP PERFORMANCE IS VITAL

Stenner pumps offer advantages for reliable 1:128 injection and water treatment on farms.

- Inject directly into the water line and eliminate water restriction
- Pumps are unaffected by poor water quality
- Dose undiluted chemicals accurately and eliminate daily stock solution mixing
- Utilize existing water meter and controller with pumps with built-in repeater relay



[Animated Video](#)
Econ 1:128 Stennicator
Pump on a Poultry Farm



Since 1957

Stenner has
manufactured
peristaltic metering
pumps providing
accurate, repeatable
injection with simple
operation and
maintenance.

Stenner Pump Benefits

- Self-priming
- No loss of prime from off-gassing solutions
- Solutions do not contact moving parts
- Can run dry without damage
- Three-point roller design helps prevent backflow, siphoning and overdosing
- Simple tube replacement without tools

LOW FLOW WATER METER



VPD WATER METER

3/4" Vertical positive displacement meter
Registers flow rates from 0.1 to 22 gpm

Ideal for early stage poultry flocks
and swine nurseries
when water flow is minimal.



Available as 1 PPG or 1 PPL



Mount in vertical or horizontal*
position or on an incline*



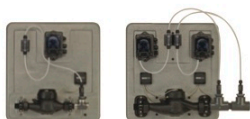
* Meter must be full of water.

1:128 Injection Pumps

ECON STENNICATOR

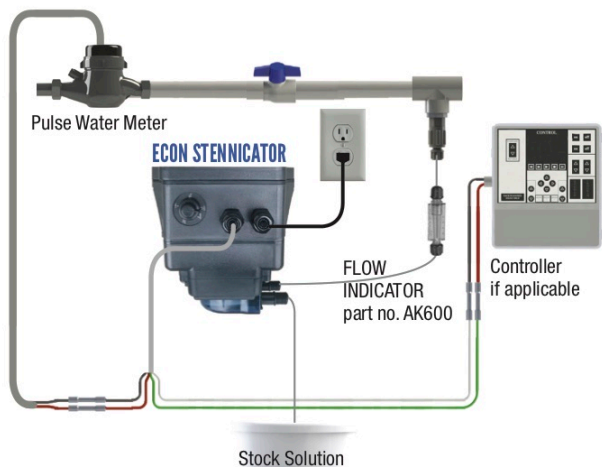


Flow rate outputs 2.7 oz/min up to 80 psi
Accepts pulses 1 or 10 PPG or 1 PPL



Meter System

Pre-assembled for quick installations



Wire a **second Stennicator** in series for system flows up to 5.4 gal/min.

All Stenner 1:128 Injection Pumps

- Activated by a dry contact pulsing water meter.
- Built-in repeater relay; one water meter can activate pump & register water consumption with house controller.
- Repeater relay continues to send water meter pulses even when utilizing the standby setting to disable the pump.
- Standby setting allows tube replacement without disconnecting the pump.

S128



Medicator automatically adjusts to the system water flow with three speeds to evenly distribute product.

Proportionally injects especially at low flow rates.

Injects directly into system flow up to 10 GPM.

Flow Rate Outputs
10.0 oz/min. up to 60 psi

Pulse Rates
1 or 10 PPG or 1 PPL

LED Indicators
Power, Standby, Change, Level, Overrun, Leak, Fault

Leak Detect Setting

Set the pump to stop or continue to run when a leak is detected. When detected, Leak flashes on the display.

Option to send an output relay to another device.

Tube Change Timer

Set the hours for the pump tube to run before the change indicator flashes as a tube replacement reminder.

Standby Input

Start or stop remotely with standby feature.

Water Treatment Injection Pumps

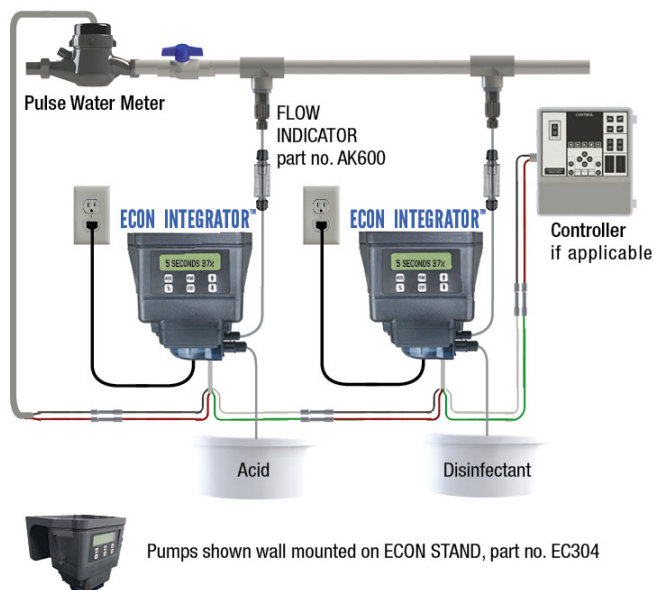
Activate Multiple Pumps From One Water Meter ECON INTEGRATOR™



6 models up to 30 gpd @ 80 psi
10:1 turndown in 1% increments

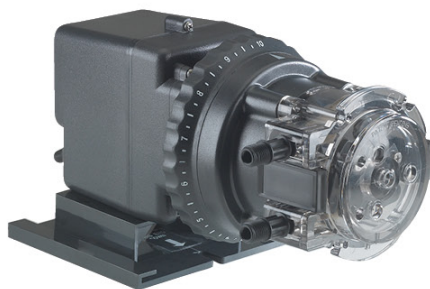


Meter System
Pre-assembled for
quick installations



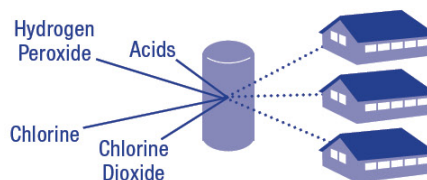
Pumps shown wall mounted on ECON STAND, part no. EC304

Treat Multiple Locations From A Single Source CLASSIC SERIES ADJUSTABLE

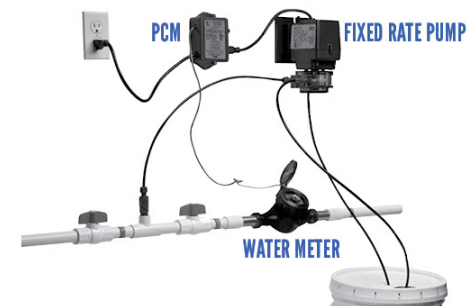


6 models up to 40 gpd @ 100 psi
Flow rate output adjustment 5% to 100%, 2.5% increments
Snap-fit design accesses three components without tools

Inject at the well for disinfection and acidification. Wire pump into well pump circuit or pressure switch and manually adjust pump rate with external dial ring.



Proportional Injection Based on System Flow Rate



A pulsing dry contact water meter sends a signal to the PCM (time adjustable controller). The PCM actuates the fixed rate pump to proportionally inject the desired dose based on the system flow rate.

CLASSIC SERIES FIXED RATE PUMP

Flow Rate Outputs up to 100 psi

3 gpd	17 gpd
5 gpd	22 gpd
10 gpd	40 gpd

PCM

Adjustable Operating Seconds

0.1-1.0
0.5-5.0
1.0-10.0
2.0-20.0

WATER METER

Reed Switch with Dry Contact Closure
- 3/4" VPD (vertical positive displacement)
- 3/4", 1" or 1/2" plastic
- 2" stainless steel

Consistently Delivers Liquid Oral Vaccines Over 6 Hours **VACCINATOR™**



- Built-in timer shuts off pump automatically
- Eliminates the need to pre-measure stock solutions
- Reduces labor
- Available as 1 gallon (US) or 5 liters (Europe)

STENNER PUMPS®

STENNER PUMP COMPANY

Jacksonville, Florida USA

Phone 904.641.1666

US & Canada 800.683.2378

www.stenner.com

sales@stenner.com

© Stenner Pump Company All Rights Reserved



Assembled in the USA

This information is not intended for specific application purposes. Stenner Pump Company reserves the right to make changes to prices, products, and specifications at any time without prior notice.

SBAHE 011020b