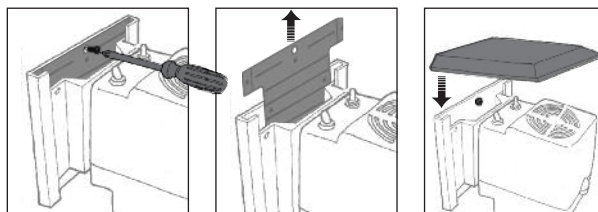


TANK SYSTEM INSTALLATION INSTRUCTIONS

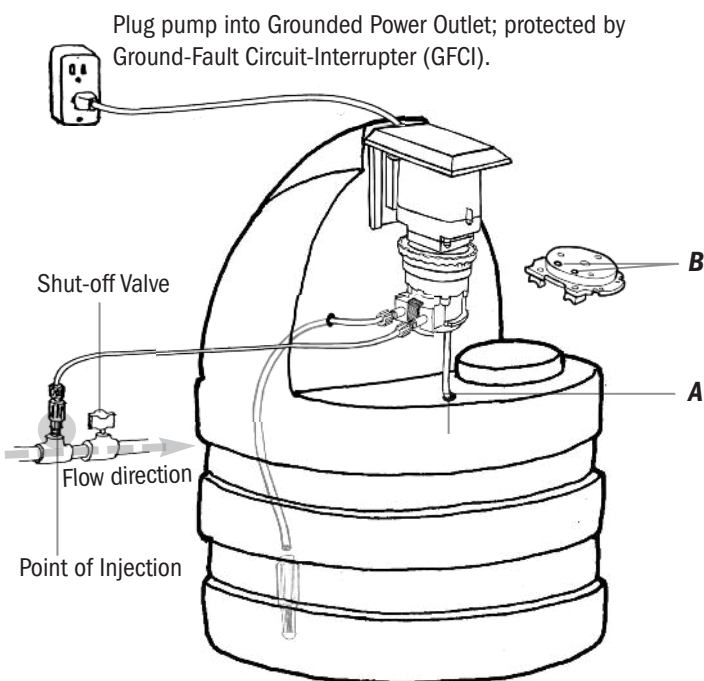
⚠ WARNING TO BE INSTALLED AND MAINTAINED BY PROPERLY TRAINED PROFESSIONAL INSTALLER ONLY. READ MANUAL & LABELS FOR ALL SAFETY INFORMATION & INSTRUCTIONS.

Classic Single Head Pump Tank System ONLY

IMPORTANT! The Classic Tank System is shipped with an insert between the motor base and mounting bracket to prevent damage during shipping. Please remove the top screw in the mounting bracket and remove insert, then reinstall the screw and install the rainroof.



Installation example shows the Classic Adjustable model.



- 1 Install the injector into the pipe or fitting.
- 2 Install the discharge line from the discharge side of the pump head to the injection point.
- 3 Secure the weighted strainer to the suction line inside the tank and position 3" from tank bottom. Then install the line to the suction side of the pump head.
- 4 Install the optional spill recovery. The spill recovery is not recommended for acid applications and is not applicable to the Econ Pump Line or to any pumps with an S4 pump prefix.
 - Drill a 1/4" hole in tank surface below pump head **A**.
 - Unlatch and remove pump head cover.
 - Punch out one of two hole plugs using a 7/32" punch **B** (alternatively, you can use a 7/32" drill).
 - Reinstall pump head cover, secure latches.
 - Cut a 6" section of 1/4" suction/discharge tubing and insert ends through holes **A** and **B**.
- 5 Connect the power cord to the proper pump control circuit.
- 6 Fill the tank with solution and securely tighten the locking cap.
- 7 Prime the pump and perform final adjustments, as shown in the pump manual.

NOTE: Tank Systems are not available with pumps with S5, 100 or 170 pump prefixes.