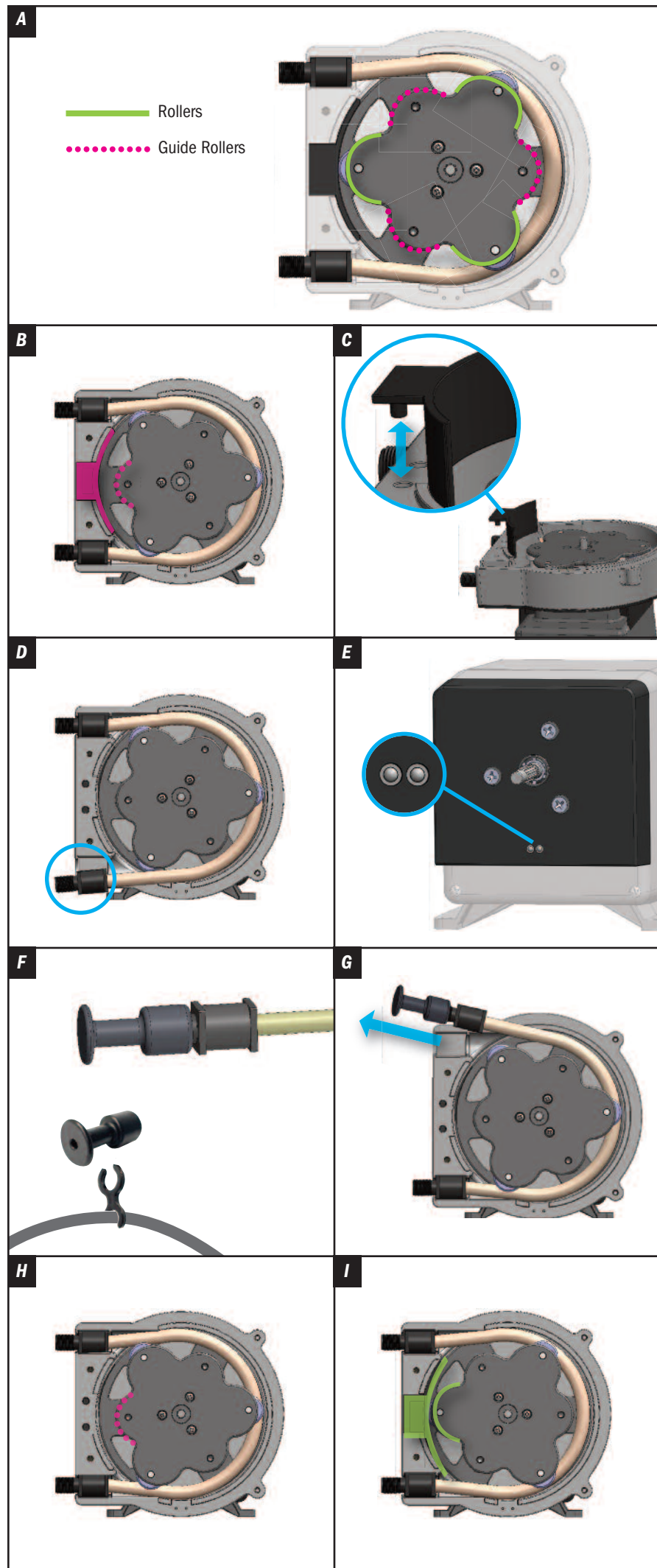


S4 & S5 Pump Head *Pumps with S4 or S5 prefix and pump head cover thumbscrews* DISASSEMBLY, INSPECTION AND REASSEMBLY INSTRUCTIONS

Go to stenner.com/S4QP for instructions on the S4QP pump head with metal latches

⚠️ WARNING TO BE INSTALLED AND MAINTAINED BY PROPERLY TRAINED PROFESSIONAL INSTALLER ONLY. READ MANUAL & LABELS FOR ALL SAFETY INFORMATION WARNING & INSTRUCTIONS.

The illustrations show the S5 Pump Head.



Tube Replacement Pump Head Replacement Pump Head Service Kit

Always replace any pieces not in working order.

PREPARATION

1. Follow all safety precautions prior to tube replacement.
2. Prior to service, pump water or a compatible buffer solution through the pump and suction and discharge lines to remove chemical and avoid contact.
3. Identify rollers and guide rollers in the roller assembly. **A**

DISASSEMBLY

⚠️ WARNING PINCH POINT Pump rollers are a pinch point risk. Tube installations must use tube pull. Keep fingers away from roller assembly while pump is on.

1. Disconnect the input signal.
2. Depressurize and disconnect suction and discharge lines.
3. Remove thumbscrews and tube housing cover.
4. Run pump at 10% speed or for S128 Series in TUBE CHANGE JOG.
5. Stop the pump so that one guide roller is aligned with the center of the pump. **B**
6. Remove pump head support. **C**
7. Run pump at 10% speed or for S128 Series in TUBE CHANGE JOG and close control panel cover.
8. Hold pump securely with one hand. With the other hand, lift the tube fitting out of the suction slot in the tube housing. **D**
9. Walk tube out while roller assembly slowly rotates or jogs. Discard pump tube.
10. Turn pump off and close control panel cover.
11. Remove roller assembly.

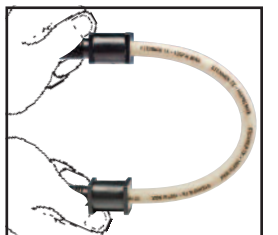
INSPECTION

1. Use a non-citrus all-purpose cleaner to clean residue from tube housing, roller assembly, pump head support and cover.
2. Check the housing and cover for cracks and replace if cracked.
3. If removing the housing, inspect the transition sleeve and ball detents. Replace sleeve if torn or if the ball detents are missing or crushed. The ball detents are required for leak detection. **E**
4. Inspect rollers to ensure they turn freely and are not worn. Replace if worn or seized or if there is a reduction or lack of output from the pump.

REASSEMBLY

1. Ensure the input signal is disconnected.
2. Ensure pump is off and control panel cover is closed.
3. Install tube housing if removed.
4. Lightly apply AquaShield along the entire shaft. **IMPORTANT! DO NOT lubricate pump tube or roller assembly.**
5. Install roller assembly.
6. Remove tube pull from the holder on the power cord and screw securely onto one tube fitting. **F**
7. Place the other tube fitting into the suction side of tube housing.
8. Run pump at 10% speed or for S128 Series in TUBE CHANGE JOG and close control panel cover.
9. Hold pump securely with left hand and hold tube pull with right hand. With slight tension, walk tube around the roller assembly, take care to not let the fitting slip out of the housing. Once tube is mostly installed, use the tube pull to draw the fitting towards you into the discharge slot of the tube housing. **G**
10. Turn pump off and close the control panel cover.
11. Unscrew tube pull from the tube fitting and return it to the holder on the power cord. **F**
12. Run pump at 10% speed or for S128 Series in TUBE CHANGE JOG. When one guide roller is between each tube fitting, turn pump off stop the roller assembly. **H**
13. Reinstall pump head support by pressing it into place. **C**
14. Run pump at 10% speed or for S128 Series in TUBE CHANGE JOG. When one roller is aligned with the center of the pump head support, turn pump off stop the roller assembly. **I**
15. Reinstall tube housing cover and thumbscrews.
16. Inspect the suction and discharge lines, point of injection, and check valve for blockages. Clean and/or replace as required. Failure to do so may lead to poor pump performance, including shortened tube life. Always read the manual for complete instructions.
17. Reconnect the suction and discharge lines.
18. Turn the pump on and verify operation.

IMPORTANT! DO NOT twist the tube during installation. To ensure it doesn't twist, keep the tube positioned so the printed description stays aligned along the length of the tube.



CLEANING THE POINT OF INJECTION

⚠️ WARNING Warns about hazards that CAN cause death, serious personal injury, or property damage if ignored.

⚠️ WARNING HAZARDOUS PRESSURE/CHEMICAL EXPOSURE

⚠️ WARNING Use caution and bleed off all resident system pressure prior to attempting service or installation.

⚠️ WARNING Use caution when disconnecting discharge line from pump. Discharge line may be under pressure. Discharge line may contain chemical.

⚠️ WARNING To reduce risk of exposure, the use of proper personal protective equipment is mandatory when working on or near chemical metering pumps.

ⓘ NOTICE: Indicates special instructions or general mandatory action.

ⓘ NOTICE: Pumps are installed with a ball check valve allowing the extension tip to be installed in the center of the pipe directly in the flow of water to help reduce deposit accumulation.

1. Turn metering pump off and unplug cord. Disable any water pump or auxiliary equipment's electrical supply.
2. Depressurize system and bleed pressure from pump discharge line.
3. Loosen and remove 3/8" connecting nut from the ball check valve to disconnect discharge tubing.
4. Unscrew the top fitting (check valve body) to disassemble. The bottom fitting (injection fitting with arrow) should remain attached to the pipe.
5. Remove the spring, seat, ball and O-ring from the check valve body. Inspect and replace components as needed. Be careful to not stretch or damage the spring.
6. Insert a #2 Phillips head screwdriver through injection fitting into the pipe to locate or break up accumulated deposits. If screwdriver cannot be inserted, drill the deposit out of the injection fitting. DO NOT drill through the opposite pipe wall.
7. Replace discharge line if cracked or deteriorated. If the end is clogged, cut off the calcified or blocked section of discharge line.
8. Reassemble the ball check valve.
9. Replace the 3/8" connecting nut and reconnect the discharge line into the ball check valve. Insert the discharge line into the base until it stops, approximately 3/4".
10. Tighten the 3/8" connecting nut finger tight while firmly holding the tube fitting then wrench tighten the 3/8" connecting nut one additional half turn. If leak occurs, gradually tighten the 3/8" connecting nut as required.
11. Enable any water pump or auxiliary equipment's electrical supply and pressurize the water system.
12. Put the metering pump back in service and inspect all connections for leaks.